

MBRLP



MEDIUM PRESSURE FAN FOR PAINT WORKSHOPS

MANUFACTURING FEATURES:

- Rolling steel sheet housing.
- Fully welded or joined housing.
- With flanged inlet to make possible the direct join in the paint shop outlet.
- Inspection door included.
- Cabin fans supplied, if requested, with spark proofing inlet.
- Single inlet backward curved impeller manufactured in rolled steel sheet with epoxy powder finishing coat.
- Epoxy powder finishing coat.
- Standard asynchronous squirrel-cage motor with IP-55 protection and class F insulation. Standard voltages 230/400V 50Hz.
- Sparkproof inlet flange.
- Standard orientation LG270.

APPLICATIONS:

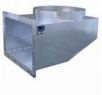
Designed to be fixed at the inlet double flange, with the motor in vertical position.

- Industrial applications, extraction or injection of air.
- Cooling of machines and parts.
- Clean and slightly dusty air transport.
- Exhaust after filters in paint workshops.
- Exhaust after filters, separators and cyclones.
- Pneumatic transport.
- Maximum working temperature: carried air: 130°C, ambient: 60°C.

UNDER REQUEST:

- 60Hz fans and special voltages.
- 2 speed motor.
- Spark-proof fans with ATEX certified motor.
- Hot-dipped galvanised or stainless steel fans.
- Orientation: RD0, RD45, RD90, RD135, RD180, RD225, RD270, RD315, LG0, LG45, LG90, LG135, LG180. LG225, LG315

Accessories



CP



EI



INT



RA



SFC

Technical data

Three-phase motor / 4 poles

| Code | Model | R.P.M. | Rated I. (A) 400V | Rated power kW | Max. Airflow m3/h | Sound db (A)* | Weight | Connect. diagram |
|-----------|--------------------|--------|-------------------|----------------|-------------------|---------------|--------|------------------|
| 501704545 | MBRLP 454 T4 1,1kW | 1400 | 2,49 | 1,10 | 5.400 | 56 | 94 | 1 |
| 501705046 | MBRLP 503 T4 1,5kW | 1400 | 3,26 | 1,50 | 9.000 | 57 | 123 | 1 |
| 501705656 | MBRLP 561 T4 3kW | 1430 | 6,17 | 3 | 12.600 | 62 | 153 | 1 |
| 501705659 | MBRLP 562 T4 4kW | 1440 | 8,32 | 4 | 16.200 | 63 | 158 | 1 |
| 501706361 | MBRLP 631 T4 5,5kW | 1440 | 10,5 | 5,50 | 19.800 | 64 | 202 | 1 |
| 501706363 | MBRLP 632 T4 7,5kW | 1440 | 14,1 | 7,50 | 21.600 | 66 | 214 | 1 |

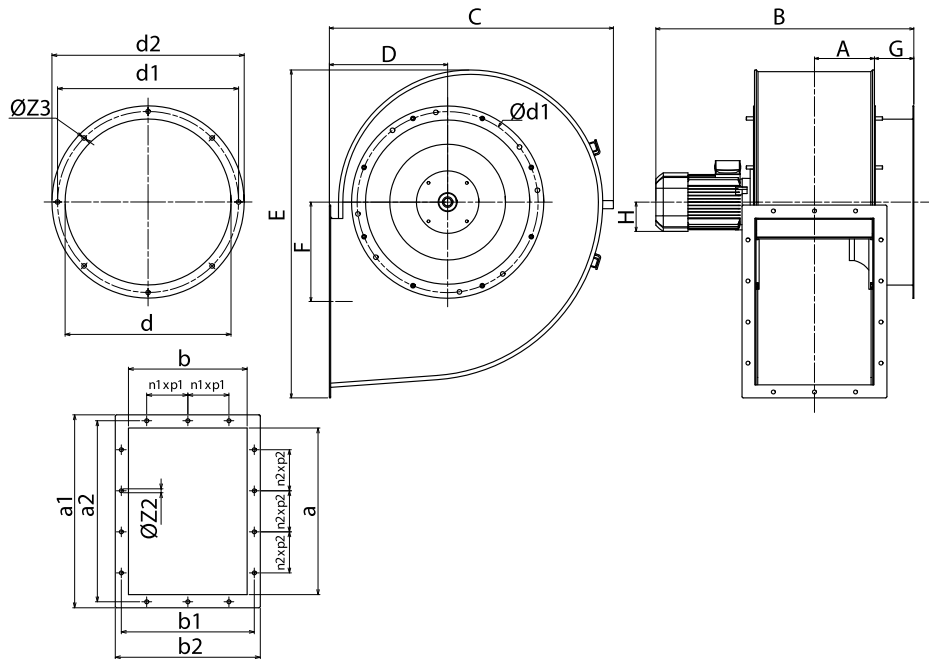
Three-phase motor / 6 poles

| Code | Model | R.P.M. | Rated I. (A) 400V | Rated power kW | Max. Airflow m3/h | Sound db (A)* | Weight | Connect. diagram |
|-----------|--------------------|--------|-------------------|----------------|-------------------|---------------|--------|------------------|
| 501706374 | MBRLP 633 T6 1,5kW | 940 | 3,71 | 1,50 | 12.600 | 55 | 173 | 1 |
| 501706378 | MBRLP 634 T6 2,2kW | 940 | 5,94 | 2,20 | 14.400 | 55 | 180 | 1 |
| 501707180 | MBRLP 713 T6 3kW | 960 | 7,3 | 3 | 16.200 | 58 | 276 | 1 |
| 501707183 | MBRLP 714 T6 4kW | 960 | 9,46 | 4 | 21.600 | 60 | 286 | 1 |

Notes:

* Total sound pressure level at the point of maximum flow measured in dB(A) in the suction measured in free field at a distance of 6m from the source

Dimensions



| Model | A | B | C | D | E | F | G | H | a |
|--------------------|-----|------|------|-----|------|-----|-----|-----|-----|
| MBRLP 454 T4 1,1kW | 163 | 745 | 766 | 320 | 898 | 275 | 120 | 90 | 453 |
| MBRLP 503 T4 1,5kW | 183 | 785 | 864 | 360 | 998 | 300 | 120 | 90 | 507 |
| MBRLP 561 T4 3kW | 204 | 867 | 965 | 400 | 1122 | 332 | 120 | 100 | 569 |
| MBRLP 562 T4 4kW | 204 | 861 | 965 | 400 | 1122 | 332 | 120 | 112 | 569 |
| MBRLP 631 T4 5,5kW | 229 | 966 | 1073 | 450 | 1253 | 374 | 120 | 132 | 638 |
| MBRLP 632 T4 7,5kW | 229 | 1016 | 1073 | 450 | 1253 | 374 | 120 | 132 | 638 |
| MBRLP 633 T6 1,5kW | 229 | 917 | 1073 | 450 | 1253 | 374 | 120 | 100 | 638 |
| MBRLP 634 T6 2,2kW | 229 | 910 | 1073 | 450 | 1253 | 374 | 120 | 112 | 638 |
| MBRLP 713 T6 3kW | 256 | 1022 | 1189 | 500 | 1403 | 430 | 120 | 132 | 715 |
| MBRLP 714 T6 4kW | 256 | 1022 | 1189 | 500 | 1403 | 430 | 120 | 132 | 715 |

| Model | a1 | a2 | b | b1 | b2 | d | d1 | d2 | n1xp1 |
|--------------------|-----|-----|-----|-----|-----|-----|-----|-----|-------|
| MBRLP 454 T4 1,1kW | 533 | 497 | 332 | 366 | 402 | 455 | 497 | 535 | 2x125 |
| MBRLP 503 T4 1,5kW | 587 | 551 | 361 | 405 | 441 | 505 | 551 | 585 | 2x125 |
| MBRLP 561 T4 3kW | 669 | 629 | 404 | 464 | 504 | 565 | 629 | 665 | 2x160 |
| MBRLP 562 T4 4kW | 669 | 629 | 404 | 464 | 504 | 565 | 629 | 665 | 2x160 |
| MBRLP 631 T4 5,5kW | 738 | 698 | 453 | 513 | 553 | 635 | 698 | 735 | 2x160 |
| MBRLP 632 T4 7,5kW | 738 | 698 | 453 | 513 | 553 | 635 | 698 | 735 | 2x160 |
| MBRLP 633 T6 1,5kW | 738 | 698 | 453 | 513 | 553 | 635 | 698 | 735 | 2x160 |
| MBRLP 634 T6 2,2kW | 738 | 698 | 453 | 513 | 553 | 635 | 698 | 735 | 2x160 |

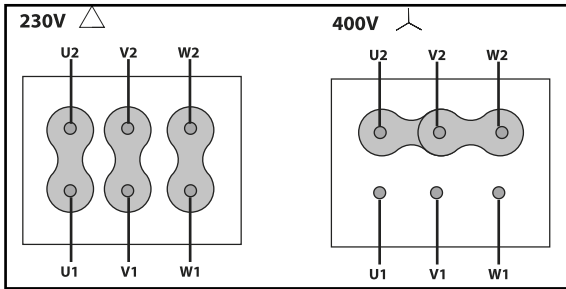
| Model | a1 | a2 | b | b1 | b2 | d | d1 | d2 | n1xp1 |
|------------------|-----|-----|-----|-----|-----|-----|-----|-----|-------|
| MBRLP 713 T6 3kW | 815 | 775 | 507 | 567 | 607 | 715 | 775 | 815 | 2x160 |
| MBRLP 714 T6 4kW | 815 | 775 | 507 | 567 | 607 | 715 | 775 | 815 | 2x160 |

| Model | n2xp2 | ØZ2 | ØZ3 |
|--------------------|-------|-----|------|
| MBRLP 454 T4 1,1kW | 3x125 | 12 | 12,5 |
| MBRLP 503 T4 1,5kW | 3x125 | 12 | 14 |
| MBRLP 561 T4 3kW | 3x160 | 14 | 14 |
| MBRLP 562 T4 4kW | 3x160 | 14 | 14 |
| MBRLP 631 T4 5,5kW | 3x160 | 14 | 14 |
| MBRLP 632 T4 7,5kW | 3x160 | 14 | 14 |
| MBRLP 633 T6 1,5kW | 3x160 | 14 | 14 |
| MBRLP 634 T6 2,2kW | 3x160 | 14 | 14 |
| MBRLP 713 T6 3kW | 4x160 | 14 | 14 |
| MBRLP 714 T6 4kW | 4x160 | 14 | 14 |

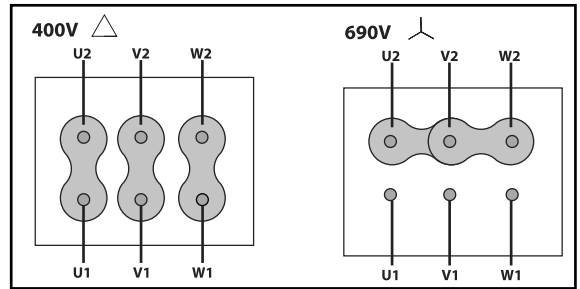
Wiring diagram

DIAGRAM Nº 1

230/400V



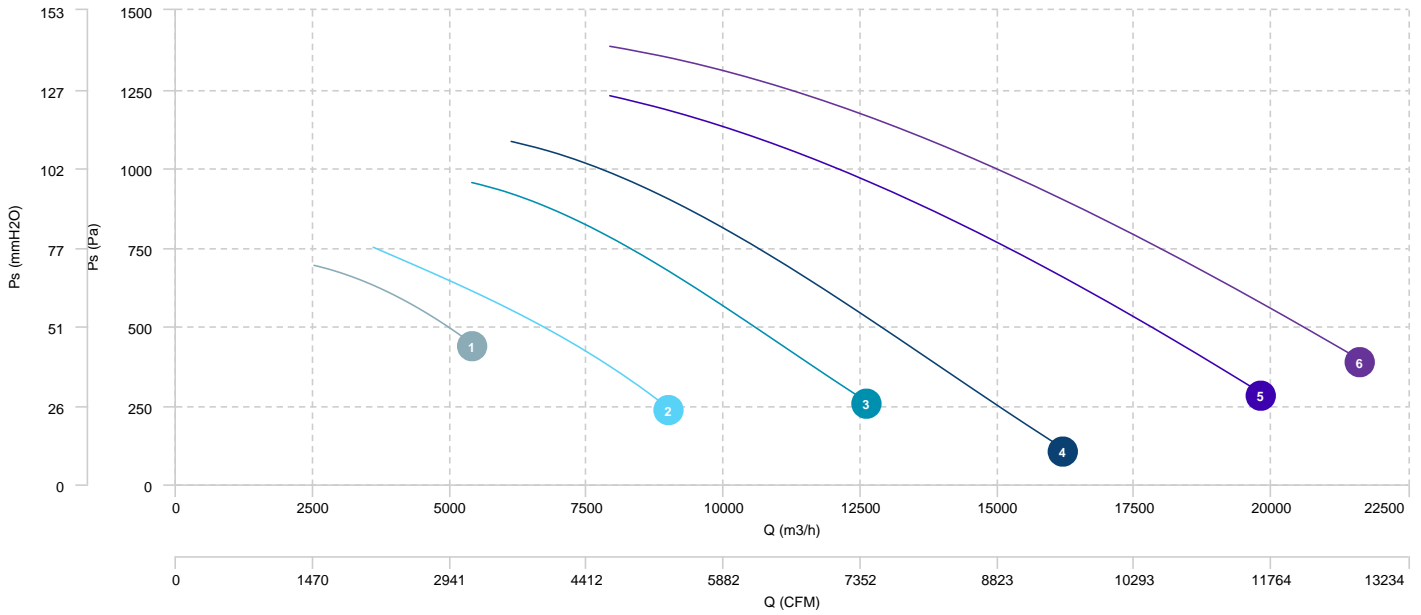
400/690V



CHARACTERISTIC CURVE

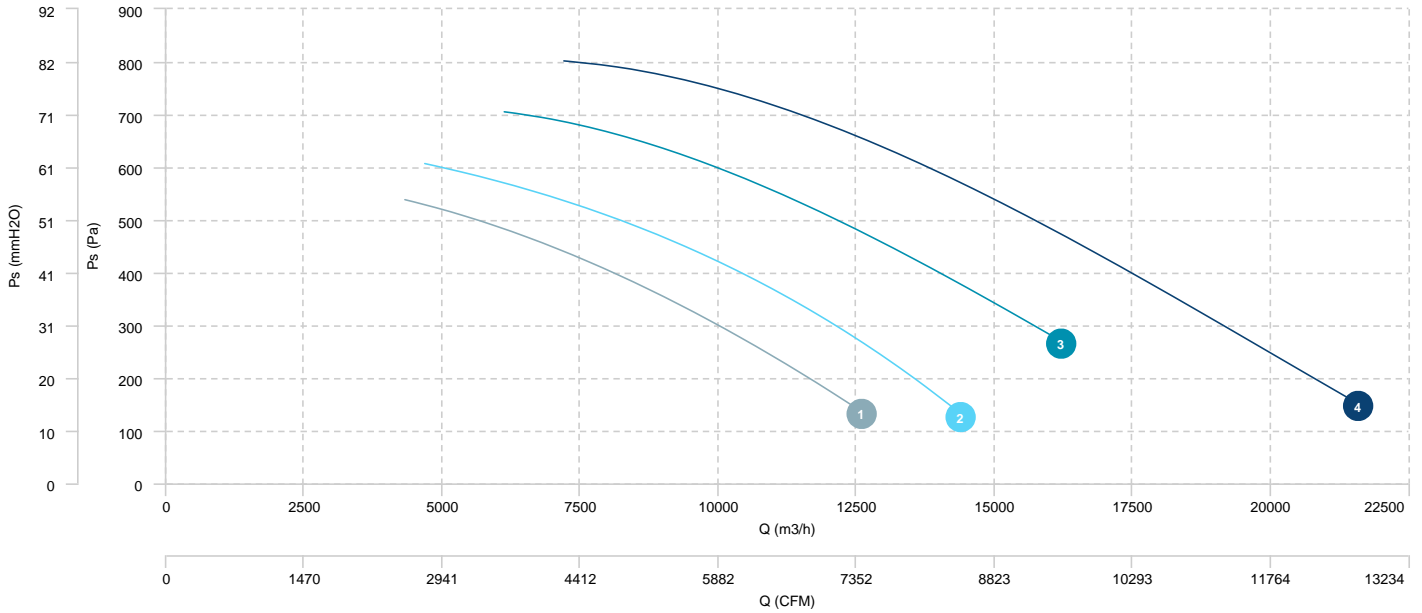
| | | | | | | | |
|---|--------------------|---|--------------------|---|------------------|---|------------------|
| 1 | MBRLP 454 T4 1,1kW | 2 | MBRLP 503 T4 1,5kW | 3 | MBRLP 561 T4 3kW | 4 | MBRLP 562 T4 4kW |
| 5 | MBRLP 631 T4 5,5kW | 6 | MBRLP 632 T4 7,5kW | | | | |

AIR FLOW - PRESSURE



- 1 MBRLP 633 T6 1,5kW
- 2 MBRLP 634 T6 2,2kW
- 3 MBRLP 713 T6 3kW
- 4 MBRLP 714 T6 4kW

AIR FLOW - PRESSURE



Sound data

Sound / 4 poles

| | | Sound power Lw dB (A) | | | | | | | | |
|--------------------|-------|-----------------------|--------|--------|--------|---------|---------|---------|---------|-------|
| Model | | 63 Hz | 125 Hz | 250 Hz | 500 Hz | 1000 Hz | 2000 Hz | 4000 Hz | 8000 Hz | Total |
| MBRLP 454 T4 1,1kW | Inlet | 54 | 66 | 72 | 77 | 77 | 73 | 66 | 63 | 82 |
| MBRLP 503 T4 1,5kW | Inlet | 56 | 68 | 74 | 78 | 79 | 75 | 68 | 65 | 83 |
| MBRLP 561 T4 3kW | Inlet | 61 | 73 | 79 | 83 | 84 | 79 | 73 | 70 | 88 |
| MBRLP 562 T4 4kW | Inlet | 62 | 74 | 80 | 84 | 85 | 81 | 74 | 71 | 89 |
| MBRLP 631 T4 5,5kW | Inlet | 63 | 75 | 81 | 85 | 86 | 81 | 75 | 72 | 90 |
| MBRLP 632 T4 7,5kW | Inlet | 65 | 77 | 83 | 87 | 88 | 83 | 77 | 74 | 92 |

Sound / 6 poles

| | | Sound power Lw dB (A) | | | | | | | | |
|--------------------|-------|-----------------------|--------|--------|--------|---------|---------|---------|---------|-------|
| Model | | 63 Hz | 125 Hz | 250 Hz | 500 Hz | 1000 Hz | 2000 Hz | 4000 Hz | 8000 Hz | Total |
| MBRLP 633 T6 1,5kW | Inlet | 53 | 65 | 72 | 76 | 77 | 72 | 66 | 63 | 81 |
| MBRLP 634 T6 2,2kW | Inlet | 54 | 66 | 72 | 76 | 77 | 73 | 66 | 63 | 81 |
| MBRLP 713 T6 3kW | Inlet | 57 | 69 | 75 | 79 | 80 | 75 | 69 | 66 | 84 |
| MBRLP 714 T6 4kW | Inlet | 59 | 71 | 77 | 81 | 82 | 77 | 71 | 68 | 86 |