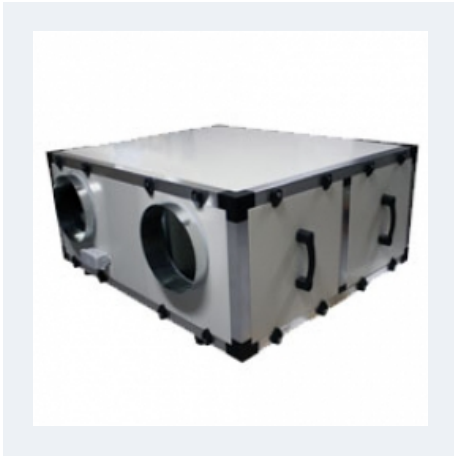


CEPHIRUS-2 EEC



HEAT RECOVERY WITH CROSS FLOW FILTER F7/F7 WITH EC MOTOR

MANUFACTURING FEATURES

Heat recovery unit (Eff. 74%) with EC (for an optimal management) motor and crossflow heat exchanger, Eurovent certified. mounted in insulated steel boxes with double skin panels of 25mm thickness. With F7 or F9 filters in fresh air and F7 in exhaust air. With F7/F7 or F7+F9/F7 filters. Versions for vertical and horizontal installation with bypass.

CHASIS:

- Modular structure in 30mm extruded aluminum profile reinforced with nylon corners.
- Double sandwich panel 25mm thickness, made of galvanized steel sheet with epoxy polyester insulated, according to EN10327 and EN10192 with polystyrene (density of 30 Kg/m3).

HEAT EXCHANGER:

- Aluminium cross flow heat exchanger with 74% efficiency.
- Eurovent certified.

FANS:

- Centrifugal fan with direct motor, coupled with double suction and according to ISO 1940 and AMCA 204-G.25 standards. ErP 2018.

FILTERS:

- F7/F7 or F7+F9/F7 filters.

CONTROL:

- CTRL-MAX: Automatic bypass, manual or automatic speed control by choosing constant flow (CAV), variable flow rate (VAV) and constant pressure (COP). Automatic management of the post-heating temperature of the electric coil or cold or hot water coil. Modbus connection.

APPLICATIONS

- Shopping centers, small shops, Banks, hospitality, schools, office buildings, public buildings.

UNDER REQUEST

- F9/F7 filters.
- Kit COP+CAV, VAV.
- Cold water coil.
- Remote display and/or Modbus protocol.

CONFIGURATIONS

- Other special configurations under request.

[See maintenance video](#)

Accessories



CWC



DCO2



FILTRORADORESS



GEC



HWC



SCO2



TEJCEP-2



VISC

Technical data

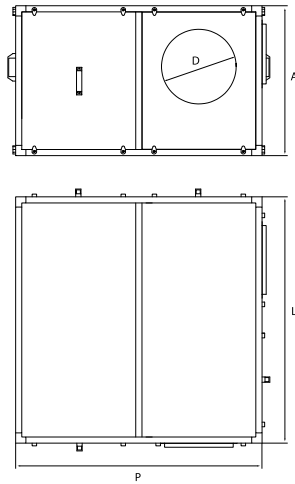
2 SPEED MOTOR

Code	Model	R.P.M.	Rated I. (A) 230V	Rated power kW	Max. Airflow m3/h	Sound db (A)**	Weight	Connect. diagram
-	CEPHIRUS-2 EEC 1200 H	2000	2x7	2x0,37	1.200	-	130	1
-	CEPHIRUS-2 EEC 1200 V	2000	2x7	2x0,37	1.200	-	130	1
-	CEPHIRUS-2 EEC 2500 H	2000	2x9	2x0,75	2.510	-	181	1
-	CEPHIRUS-2 EEC 2500 V	2000	2x9	2x0,75	2.510	-	181	1
-	CEPHIRUS-2 EEC 3700 H	1800	2x14	2x1,5	3.780	-	224	1
-	CEPHIRUS-2 EEC 3700 V	1800	2x14	2x1,5	3.780	-	224	1
-	CEPHIRUS-2 EEC 4600 H	1800	2x14	2x1,5	4.620	-	247	1
-	CEPHIRUS-2 EEC 4600 V	1800	2x14	2x1,5	4.620	-	247	1

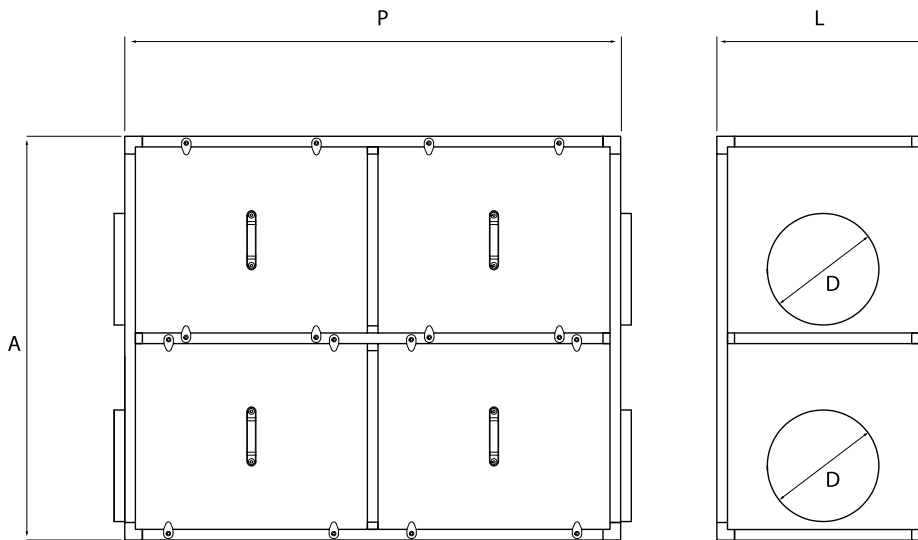
Notes:

** Total sound pressure level at the point of maximum flow measured in dB(A) in the suction measured in free field at a distance of 6m from the source

Dimensions



Model	A	D	L	P
CEPHIRUS-2 EEC 1200 H	500	315	1140	1140
CEPHIRUS-2 EEC 2500 H	600	355	1300	1300
CEPHIRUS-2 EEC 3700 H	650	355	1550	1550
CEPHIRUS-2 EEC 4600 H	700	355	1600	1600

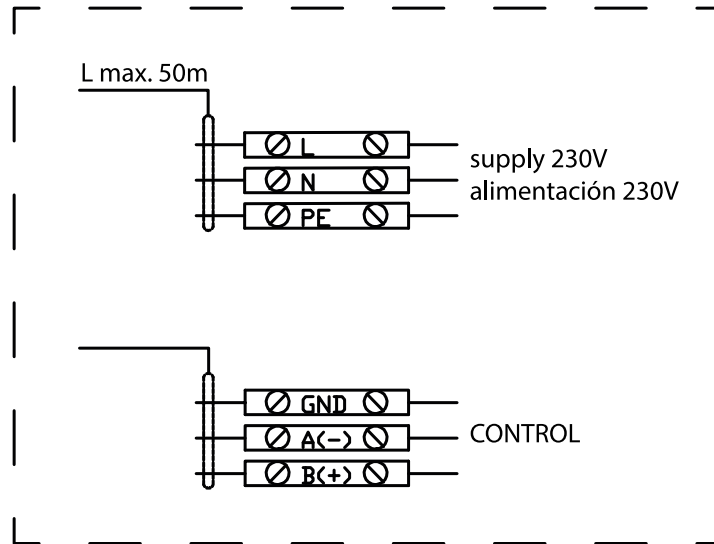


Model	A	D	L	P
CEPHIRUS-2 EEC 1200 V	1250	315	500	1500
CEPHIRUS-2 EEC 2500 V	1400	355	600	1650

Model	A	D	L	P
CEPHIRUS-2 EEC 3700 V	1700	355	650	1850
CEPHIRUS-2 EEC 4600 V	1700	355	700	2100

Wiring diagram

DIAGRAM Nº 1

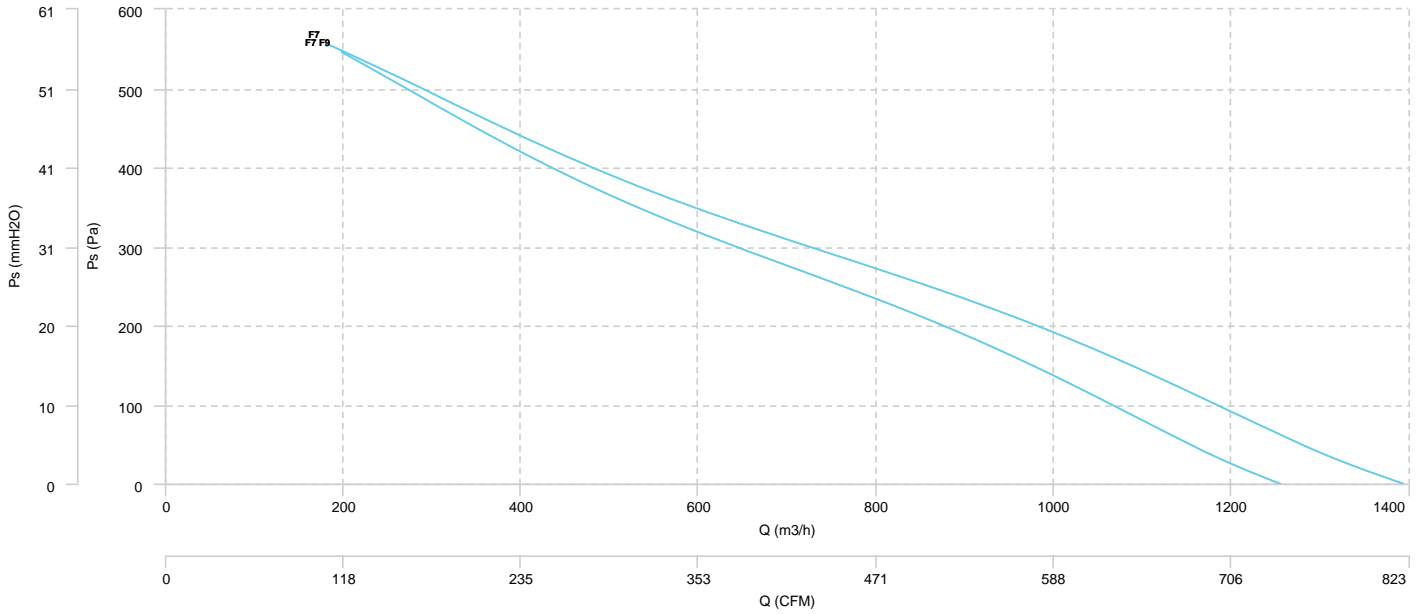


CHARACTERISCTIC CURVE

CEPHIRUS-2 EEC 1200 H

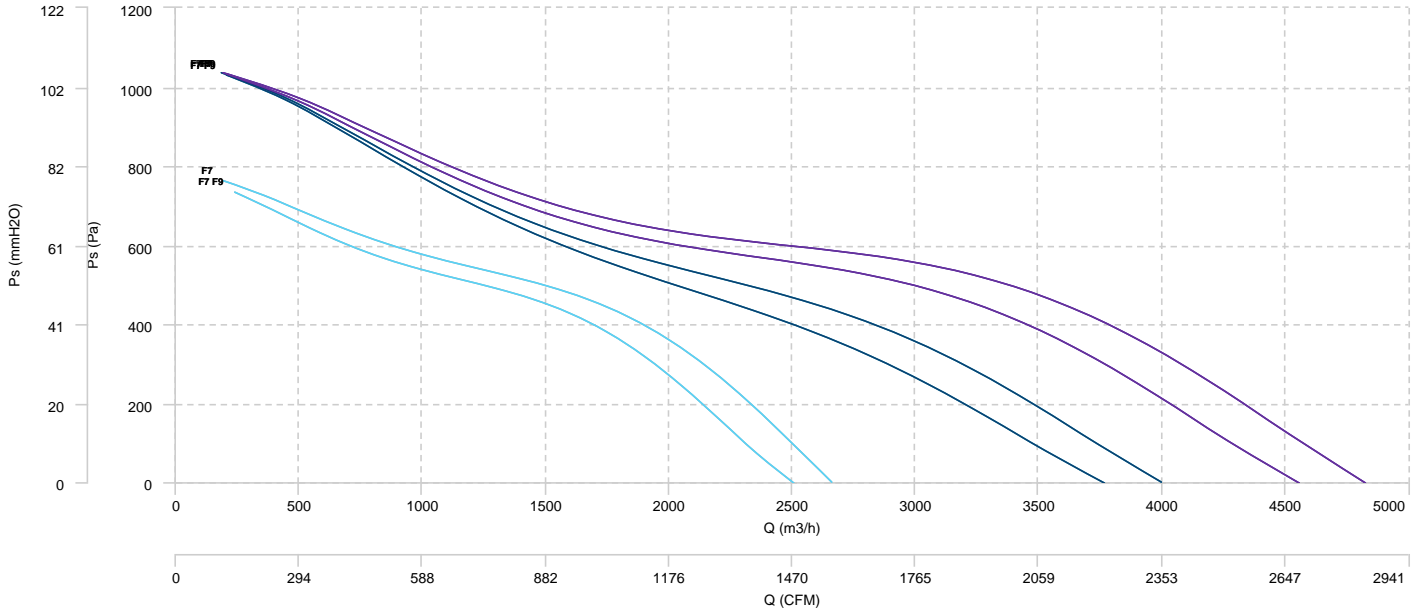
CEPHIRUS-2 EEC 1200 V

AIR FLOW - PRESSURE



CEPHIRUS-2 EEC 2500 H	CEPHIRUS-2 EEC 2500 V	CEPHIRUS-2 EEC 3700 H	CEPHIRUS-2 EEC 3700 V
CEPHIRUS-2 EEC 4600 H	CEPHIRUS-2 EEC 4600 V		

AIR FLOW - PRESSURE



Sound data

Sound power Lw dB (A)										
Model		63 Hz	125 Hz	250 Hz	500 Hz	1000 Hz	2000 Hz	4000 Hz	8000 Hz	Total
CEPHIRUS-2 EEC 1200 H	Outlet	-	63	70	72	64	56	62	65	75
CEPHIRUS-2 EEC 1200 V	Outlet	-	63	70	72	64	56	62	65	75
CEPHIRUS-2 EEC 2500 H	Outlet	-	58	66	68	60	50	57	59	71
CEPHIRUS-2 EEC 2500 V	Outlet	-	58	66	68	60	50	57	59	71
CEPHIRUS-2 EEC 3700 H	Outlet	-	53	60	61	56	43	48	49	65
CEPHIRUS-2 EEC 3700 V	Outlet	-	53	60	61	56	43	48	49	65
CEPHIRUS-2 EEC 4600 H	Outlet	-	47	50	52	44	31	33	39	55
CEPHIRUS-2 EEC 4600 V	Outlet	-	47	50	52	44	31	33	39	55