



# RESIDENTIAL VENTILATION OVERVIEW

---

## — DECENTRALISED VENTILATION



### Quantum AX

Single flow dMEV unit, Ø100mm axial type, multi-speed for continuous operation. Top energy saving 0,09 W/l/s (tested at BRE). Available in Standard version, with Timer, with Humidity Control and Constant Flow.



### Quantum NEXT

Single point HRU with alternate flow and ceramic heat recovery core. Multi-function remote controller supplied as standard. Available in Ø150mm.



### Quantum HR

Single point HRU with alternate flow and ceramic heat recovery core. 3 speed operation with free-cooling option. Available in Ø100mm and Ø150mm. Controller on request.



### QR100M

Decentralised HRU for wall installation, suitable for open space, waiting room and studio flat. Multi-speed, provided with G4 filters (F7 on request).



## — CENTRALISED HEAT RECOVERY UNITS



### QR180A

Suitable for ceiling and false-ceiling installation. Integral automatic bypass. Multi-function remote controller CTRL-DSP supplied as standard. G4 filters.



### QR280A

Suitable for cupboard installation. Integral automatic bypass. Multi-function remote controller CTRL-DSP supplied as standard. G4 filters.



### QR400A

Suitable for vertical installation. Integral automatic bypass. Multi-function remote controller CTRL-DSP supplied as standard. G4 and F7 filters.





### QR550A

Suitable for vertical installation.  
Integral automatic bypass.  
Multi-function remote controller CTRL-DSP supplied as standard.  
G4 and F7 filters.



### QR230E

Suitable for false-ceiling installation.  
High efficiency by recovering heat and humidity.  
No need of condensation drainage.  
Integral automatic bypass.  
Multi-function remote controller CTRL-DSP supplied as standard. G4 filters.



### QR280E

Suitable for cupboard installation.  
High efficiency by recovering heat and humidity.  
No need of condensation drainage.  
Integral automatic bypass.  
Multi-function remote controller CTRL-DSP supplied as standard. G4 filters.



### QR590E

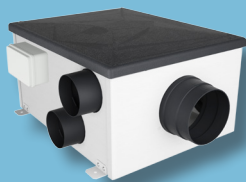
Suitable for vertical installation.  
High efficiency by recovering heat and humidity.  
No need of condensation drainage.  
Integral automatic bypass.  
Multi-function remote controller CTRL-DSP supplied as standard. G4 and F7 filters.



### CTRL-DSP

Multi-function remote control panel with LCD display for QR ventilation units.  
Easy visual selection of different options like user and installer menu, speed variations, night mode, filter and error alarm, working hour counter and status of the unit.

## — CENTRALISED EXTRACT



### QCmev

Single flow multi-spigot mechanical ventilation unit, for silent continuous operation.  
Top energy saving 0,17 W/l/s (tested at BRE).  
Available also with Humidity Control.



## — AIR DISTRIBUTION SYSTEM



### PIPE AND FITTINGS

Wide range of components for the air distribution system, including anti-bacteria and anti-static semi-rigid pipe, distribution plenum with internal acoustic lining, adjustable plenum for internal grilles and architectural grilles and diffusers.

## — DOMESTIC INTERMITTENT VENTILATION



### Quasar

Silent and high performant mixed flow Ø100mm unit.  
Suitable for wall/panel or ceiling installation.  
Available in Standard version, with Timer and 2-speeds.



### QD

Design axial fan range suitable for wall/panel, ceiling or window installation.  
Sizes: Ø90mm, Ø100mm, Ø120mm and Ø150mm. Available in Standard version, with Timer, with Humidity Control or Pull-cord.



### QS

Traditional styled axial fan range suitable for wall/panel, ceiling or window installation.  
Sizes: Ø90mm, Ø100mm, Ø120mm and Ø150mm. Available in Standard version, with Timer, with Humidity Control or Pull-cord.



### QA

Axial fan range with integral automatic shutters suitable for wall/panel, ceiling or window installation.  
Sizes: Ø90mm, Ø100mm, Ø120mm and Ø150mm. Available in Standard version, with Timer, with Humidity Control or Pull-cord.



### QB

Small domestic axial fan suitable for wall/panel or ceiling installation.  
Sizes: Ø100mm and Ø150mm.  
Available in Standard version or Timer.



### QIN

Axial fan range for in-line installation.  
Sizes: Ø100mm, Ø120mm and Ø150mm.  
Available in Standard version or Timer.  
Fixing feet available.



### QX

High performance centrifugal fans with design fascia, for wall/panel or ceiling installation, surface or recessed.  
Sizes: Ø80mm, Ø100mm. Available in Standard version, with Timer, with Humidity Control or Pull-cord.



### QMF

Compact mixed-flow fan range.  
For vertical or horizontal installation.  
Sizes: Ø100mm, Ø125mm and Ø150mm, Ø200mm.  
Available in Standard version or with Timer.



### CONTROLS & SENSORS

Comprehensive range of controllers to adjust the speed unit for silent operation and to meet the ventilation rate need.  
Ambient sensors to maintain the indoor air quality for people's health and sustainability, including, humidistat and infra-red PIR sensor.