

2025



HIGH VOLUME LOW SPEED FANS

APPLICATION

The EHS range of High Volume Low Speed fans are designed to be installed in high ceilings to redistribute air towards floor level.

They generate a gentle and slowly moving airstream which covers a large area and create a cooling effect in summer while they de-stratify the air in winter pushing the warm air down at floor level.

They are suitable for commercial, industrial and agricultural applications such as warehouses, manufacturing facilities, industry, shopping malls, airports, sports centres, greenhouses, dairy farms.

CONSTRUCTION

- Upper frame made of painted steel welded structure to protect the motor.
- Safety cables and 800mm length downrod provided as standard.
- Specially designed airfoil made from aluminium EN AW 6063 T6. The surface is anodized to avoid corrosion.
- Hub provided with safety ring.
- Aesthetic hub cover made in plastic.
- High efficiency three-phase EC brushless motor, which are specifically designed for HVLS application, 200-480Vac/3ph/50/60Hz, IP65, with integrated electronic system and EMC filters. Suitable for S1 continuous service. Speed controllable.

FEATURES & BENEFITS

- "Wide cone" air distribution under the fan.
- Top silent operation thanks to the gearless motor and the special airfoil design.
- Ideal to integrate the HVAC system, for energy saving and CO2 emission reduction.
- In winter months they are suitable to de-stratify the air pushing the warm air towards the floor level, so to even the temperature and to prevent the HVAC system to run as hard.
- In summer time the constant and gentle breeze eliminates hot and cool spots in the building by improving the internal environment and creating a natural cooling effect. The air movement also helps keeping the insects away.
- No ordinary maintenance.
- Robust steel structure for long life.
- Key safety features (main security wire, additional stabilising cables, hub safety ring).
- Hub cover to protect the motor from dust and for a better aesthetics.
- Simplified electrical connection: pre-cabled.
- Integrated EMC filters to prevent electromagnetic interference from other devices.
- Fan are suitable for operating temperatures from 0°C to +50°C.
- Unit performances are tested to the latest AMCA standard meaning accurate information that can be relied upon.

- Designed and manufactured in accordance with Machinery Directive (MD), Low Voltage Directive (LVD), Electromagnetic Compatibility Directive (EMC).

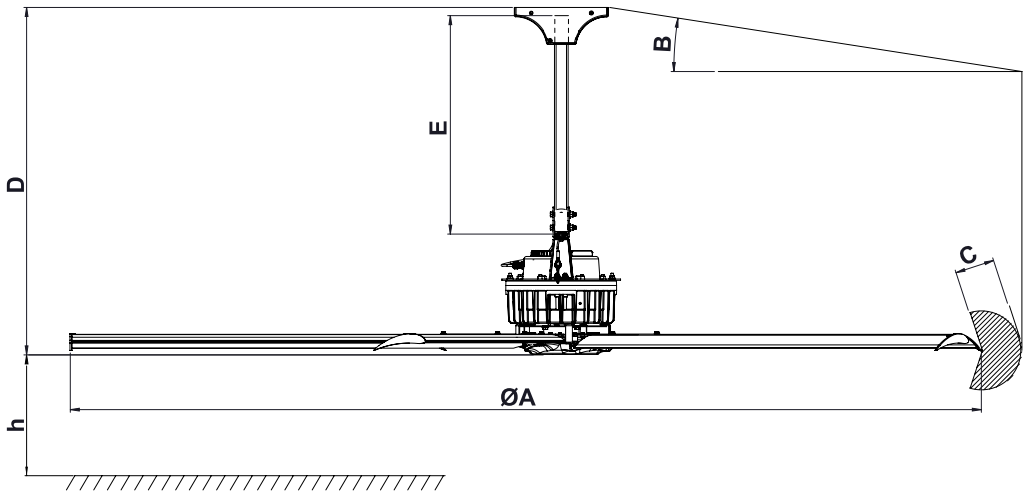
ACCESSORIES

- Remote controllers
- I-Beam fixing kit
- Glulam fixing kit

Performance @ 400Vac 50Hz

Description	No. Blades	Max Rotation Speed	Max Absorbed Power	Max Air Flow AMCA 230-15		Max Air Flow AMCA 230-99		Lp @ 100% [dB(A)]	Lp @ 50% [dB(A)]
		r/min	kW	cfm	m³/h	cfm	m³/h		
EHS360	5	120	0,79	74566	126688	105452	179164	55	39
EHS400	5	100	0,75	79963	135858	113085	192132	55	39
EHS500	5	85	0,94	130550	221805	184626	313680	57	41
EHS540	5	75	0,98	137922	234330	195051	331393	55	39
EHS600	5	70	1,00	171489	291360	242522	412045	57	41
EHS730	5	50	0,88	207516	352571	293472	498611	57	41
EHS730 PLUS	5	58	1,30	245855	417709	347692	590730	62	46

Dimensions



Description	ØA	B max ceiling slope	C min safety distance from side obstruction	D fan height with standard downrod	E standard downrod length	H min fan installation height	Weight
	mm	°	mm	mm	mm	mm	kg
EHS360	3600	20	550	1296	800	2700	97
EHS400	4000		450	1296			91
EHS500	5000		550	1296			101
EHS540	5400		650	1296			123
EHS600	6000		650	1306			118
EHS730	7300		750	1306			142
EHS730 PLUS	7300		750	1306			130









Straight blade profile



Aesthetic hub cover

Accessories

Description		Control panel		Potentiometer		Control panel	Humidity probe			Control panel
	Description	Code	Description	Code	Description	Code	Description	Code	Description	Code
EHS360	CTRL-HS	004154	CTRL-A	002049	CTRL-XTHI	005325	YGRO-100	005326	CTRL-XWS	005324
EHS400										
EHS500										
EHS540										
EHS600										
EHS730										
EHS730 PLUS										

Description	 Anemometer	 Temperature probe	I-Beam fixing kit		Fixing kit for rectangular section beams			
	Description	Code	Description	Code	Description	Code	Description	Code
EHS360	AN-SY	002741	SV-10K	005327	KT-I-BEAM	003357	KT-GLULAM	004009
EHS400								
EHS500								
EHS540								
EHS600								
EHS730								
EHS730 PLUS								

CTRL-HS



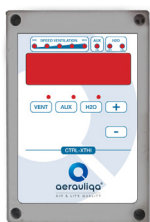
- 3,5" TFT full touch-screen colour graphic display control panel
- Provides a single point of control for up to 4 units
- To control:
 - ✓ Speed
 - ✓ Fan direction
 - ✓ Alarm warning
- RS-485 ModBus connection
- 24 VaC 50/60Hz (max 4 VA) or 12 ÷ 30VDC (max 2W)
- IP30

CTRL-A



- Potentiometer with front knob to adjust the motor speed
- Provided with two-pole switch (ON/OFF)
- Front yellow led to indicate that the load is active
- Controls one fan only
- 230V~ 50/60Hz
- Supplied with IP55 wall surface box

CTRL-XTHI



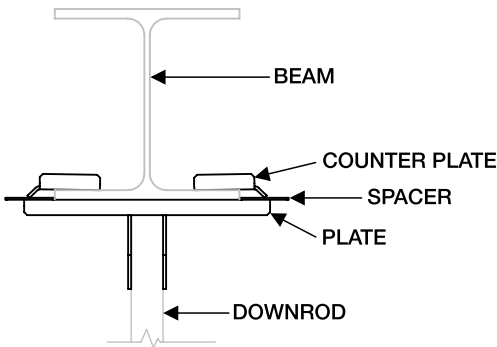
- To control the ventilation units according to temperature and THI level
- Dimensions: 160x110x81 mm
- Shower control and auxiliary ventilation activation
- Regulation 0-10V
- 230Vac - 50/60Hz
- Can control up to 10 units
- IP65 wall-mounted casing
- Temperature probe included
- Humidity probe available on request

CTRL-XWS



- To control the ventilation units according to temperature and wind speed
- Dimensions: 160x110x81 mm
- Three operating modes:
 - Mode A: control of ventilation according to wind speed by means of an anemometer (accessory on request) and blocking of the fan according to temperature
 - Mode B: control of ventilation according to room temperature using 1 temperature probe (supplied as standard) and blocking of the fan according to wind speed
 - Mode C: control of ventilation according to room temperature by means of 2 temperature probes (additional temperature probe on request) to manage winter destratification and summer comfort ventilation
- Regulation 0-10V
- 230Vac - 50/60Hz
- Can control up to 10 units
- IP65 wall-mounted casing
- 1 temperature probe included
- Wind speed probe (anemometer) available on request
- Additional temperature probe for Mode C available on request

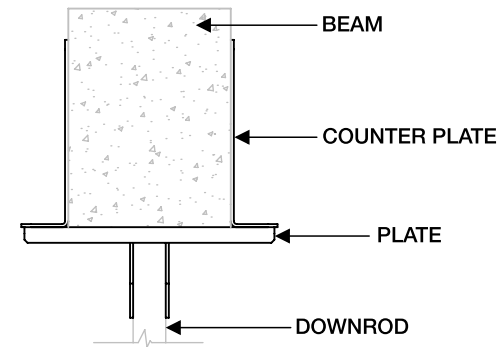
KT-I-BEAM



- I-Beam fixing kit suitable for standard IPE, HEA and HEB profiles
- Fixing screws supplied

Model	Range
IPE	from IPE180 to IPE600
HEA	from HEA100 to HEA400
HEB	from HEB100 to HEB300

KT-GLULAM



- Fixing kit suitable for rectangular beams with base between 100mm and 260mm
- Fixing screws supplied